

7-078 Compression Latch Pr20.1

Tool operable, IP67, Stainless Steel, Vibration resistant, Latched and unlatched indicators

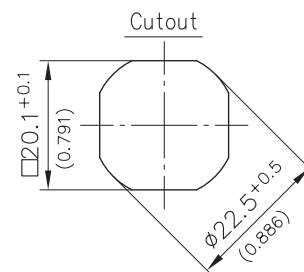
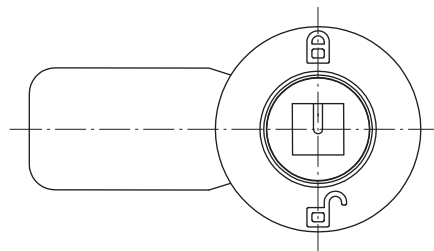
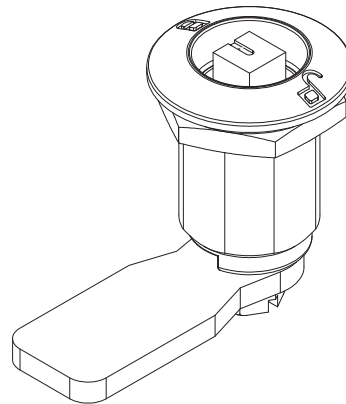
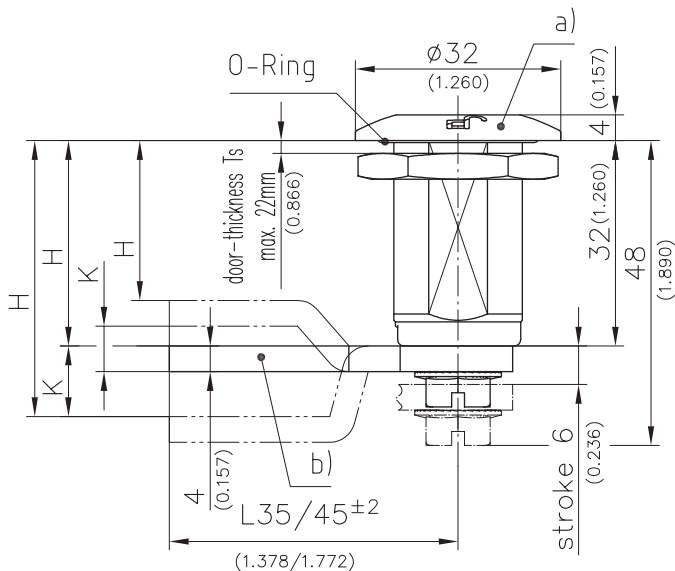


Product Notes:

- Low profile design
- Provides 6mm (0.236) compression
- Vibration resistant
- Markings on top indicate the opened/closed position
- Internal protrusion: Maximum 48mm (1.890)
- Water and dust tight according to IP67, DIN EN 60529
- RH and LH versions available
- The H-dimension can be varied via the cranking of the cams
- Using dustcap (Product System 1-270) changes H-dimension 2mm (0.079)

Material:

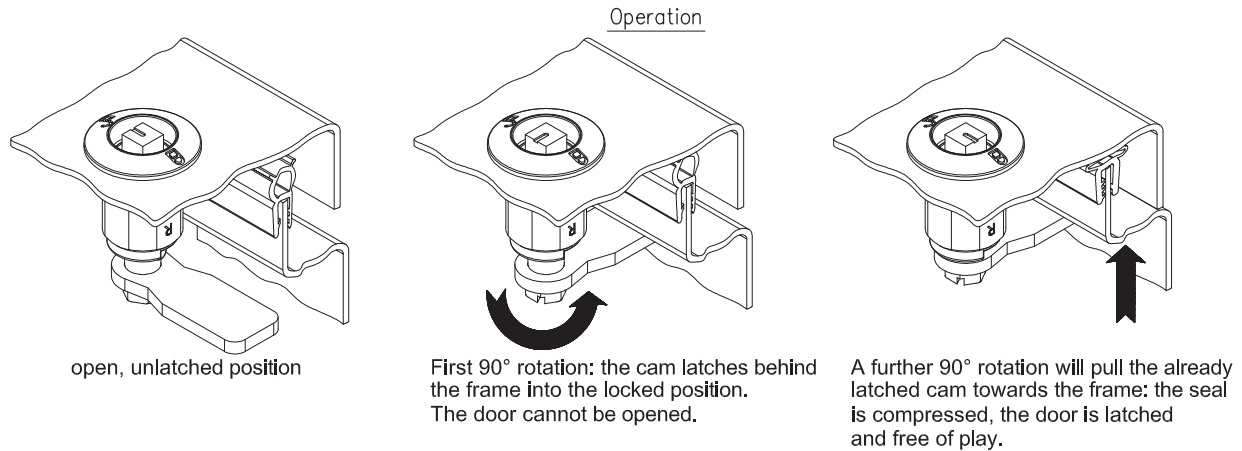
- **Housing, insert, axle and nut:** Stainless Steel AISI 316
- **Cam and serrated screw:** Stainless Steel AISI 304
- **O-Ring:** NBR



a) Compression Latch with insert without cam:	RH Part No.	LH Part No.	See Page
Insert - Square 6mm	248-91AA	248-91AA	
Insert - Square 7mm	248-9100	248-9150	
Insert - Square 8mm	248-9101	248-9151	
Insert - Double bit 3mm	248-9102	248-9152	
Insert - Double bit 5mm	248-9103	248-9153	
Insert - Triangular 6.5mm	248-9104	248-9154	
Insert - Triangular 7mm	248-9105	248-9155	
Insert - Triangular 8mm	248-9106	248-9156	
Insert - Conical square	248-9107	248-9157	
Insert - Hex. 11mm (for female key, hollow)	248-9108	248-9158	
Insert - Conical Triangular	248-9109	248-9159	
Insert - Conical Triangular	248-9110	248-9160	
Anti-rotation device			01.107
Key for insert			10.18

7-078 Compression Latch Pr20.1

Tool operable, IP67, Stainless Steel, Vibration resistant, Latched and unlatched indicators



Compression Latch with Cam and Accessories

248-91AA.00- X Y L CC

Insert version and Design:
RH or LH
see table a)

Accessories on table a):
0 = without Accessories
1 = Serrated lock washer 840-6798.00-00023
2 = Dustcap 200-4103
3 = Serrated lock washer + Dustcap

Assembling of Cam:
0 = without Cam
1 = Cam not assembled
2 = Cam assembled:
negatively bent cam
3 = Cam assembled:
positively bent cam

length of Cam: 0 = without Cam
1 = L35
2 = L45

Cranked Cam: see table b)

b) Cams	H	CC	Part No.	Part No.	
	mm / inch		L35	L45	
negative	10 / 0.394	22	100-0535.80-00022	100-0545.80-00022	
	12 / 0.472	20	100-0535.80-00020	100-0545.80-00020	
	14 / 0.551	18	100-0535.80-00018	100-0545.80-00018	
	16 / 0.630	16	100-0535.80-00016	100-0545.80-00016	
	18 / 0.709	14	100-0535.80-00014	100-0545.80-00014	
	20 / 0.787	12	100-0535.80-00012	100-0545.80-00012	
	22 / 0.866	10	100-0535.80-00010	100-0545.80-00010	
	24 / 0.945	08	100-0535.80-00008	100-0545.80-00008	
	26 / 1.024	06	100-0535.80-00006	100-0545.80-00006	
	28 / 1.102	04	100-0535.80-00004	100-0545.80-00004	
straight	30 / 1.181	02	100-0535.80-00002	100-0545.80-00002	
	32 / 1.260	00	100-0535.80-00000	100-0545.80-00000	
	positive	34 / 1.339	02	100-0535.80-00002	100-0545.80-00002
		36 / 1.417	04	100-0535.80-00004	100-0545.80-00004
		38 / 1.496	06	100-0535.80-00006	100-0545.80-00006
		40 / 1.575	08	100-0535.80-00008	100-0545.80-00008
		42 / 1.654	10	100-0535.80-00010	100-0545.80-00010
		44 / 1.732	12	100-0535.80-00012	100-0545.80-00012
		46 / 1.811	14	100-0535.80-00014	100-0545.80-00014
		48 / 1.890	16	100-0535.80-00016	100-0545.80-00016
50 / 1.969	18	100-0535.80-00018	100-0545.80-00018		
52 / 2.047	20	100-0535.80-00020	100-0545.80-00020		
54 / 2.126	22	100-0535.80-00022	100-0545.80-00022		